

PRE QUALIFICATION

ROYAL TECH ALUMINIUM & STEEL



W
I
N
D
O
W

D
O
O
R

K
I
T
C
H
E
N

A
C
P

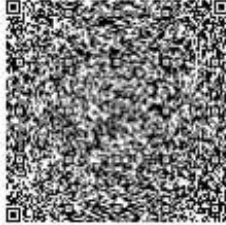
S
T
E
E

CURTAIN WALL

Excellence
In What
We Do.

Since 2014





Trade License / رخصة تجارية

Regular License - رخصة عادية

License No. **67406** رقم الرخصة



ACC No. **73468** رقم الغرفة

Register No. **65238** رقم السجل التجاري

License Details		Renew License / تجديد رخصة		تفاصيل الرخصة	
Trade Name	ROYAL TECH ALUMINIUM & STEEL WORKSHOP - L.L.C	الاسم التجاري	مشتغل رويال تك للالمنيوم والحدادة - ذ.م.م	Legal Form	Limited Liability Company
Legal Form	Limited Liability Company	الشكل القانوني	شركة ذات مسؤولية محدودة	Issue Date	2014-02-09 تاريخ الاصدار
Expire Date	2022-02-22 تاريخ الانتهاء	Issue Date	2014-02-09 تاريخ الاصدار		
Passport / رقم الجواز	Nationality / الجنسية	Manager Name / اسم المدير			
R7693513	الهند India	روي فارغيس فارغيس فارغيس ROY VARGHESE VARGHESE VARGHESE			
Activities		الأنشطة			
Metal and Iron Works		الأعمال المعدنية والحديدية			
صندوق البريد P.O. Box	تاريخ انتهاء عقد الامتياز Contract Expiry Date	اسم المؤجر / Lessor	العنوان / Address		
	2021-04-04	جمال عبدالله باقر	رقم 11، الجرف الصناعية 1 No. 11, Jurf Industrial Zone 1		
ملاحظات					
Emp No. رقم الموظف	Voucher Date: 2021-02-15 تاريخ الاصدار	Voucher No. 30111609 رقم الايصال			
		Print Date 2021-02-15 تاريخ المطاعة			

Approved electronic document issued without signature by the Department of Economic Development. To verify the license kindly visit www.ajmanded.ae

وثيقة إلكترونية معتمدة وصادرة بدون توقيع من دائرة التنمية الاقتصادية - عجمان. لمراجعة
سجدة البيانات الواردة في الرخصة برجاء زيارة الموقع الإلكتروني www.ajmanded.ae

800 70 06-7033888 06-7033889 عجمان 870 info@ajmanded.ae www.ajmanded.ae Ajmanded Ajmanded Ajmanded

Excellence In What We Do
We Care for QUALITY



About Us

Royal Tech Aluminum & Steels L.L.C is a Aluminium Fabrication and Installation firm.

We are proud to introduce ourselves as one of the emergent company, Royal Tech has the capability and expertise to design and execute a wide spectrum of aluminium facade fabrication/installation works. Though the organization is young but the key position holder is having more than 20 years Gulf experience which itself is a great asset which very few companies has.

Our goal is "To become a successful partner of our customers in resolving their day to day Manufacturing problems with excellent performance and splendid benefits accordingly"

We value always for quality, safety, timely delivery and customer service. We have an engineering back office support from Bangalore which has a team of structural engineers and Designers. we committed to provide our customers with the finest in service with the most expert fabrication and installation services.

Our Services, basic idea behind the formation of Fabrication Co is to serve its prospective clients by providing services for their Fabrication and Installation requirements, Concept of services in the following areas:

Windows, Doors, Curtain Walls and Structural Glazing.

Aluminium Composite Panel (ACP) wall cladding.

Spider Glazing, Frameless Glazing, Glass Railing and Glass Stairs.

Skylights, Domes, Canopies, Louver, Aluminium Railing.

Aluminium Kitchen Cupboards

Manufacturing, Fabrication & Welding, Structural Steel Erection & Installation.

Steel Structure, steel sheds, steel mezzanine floors.

Steel load bearing beams for lift shaft.

MS & SS Handrails, SS Grating & Chequered Plates.

Steel staircase, steel cat ladders & steel spider staircase.

Car park shades, steel fencing, steel roof truss, steel window safety grill.

Repair & Maintenance Works.

Excellence In What We Do
We Care for QUALITY

Our Scope of Works.....



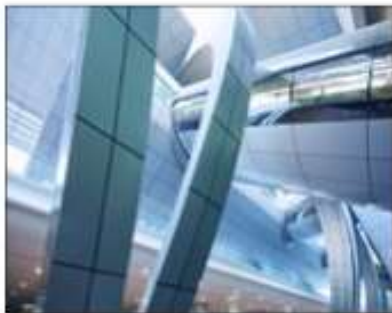
CURTAIN WALL



STRUCTURAL GLAZING



**ALUMINIUM SLIDING, CASEMENT
AND OTHER WINDOWS**



**ALUMINIUM COMPOSITE
PANEL CLADDING**



**SPIDER GLAZING, TENSION ROD
SYSTEM, CABLE TRUSSES**



SKY LIGHTS, CANOPIES, DOMES



STAINLESS STEEL / GLASS RAILINGS



AUTOMATIC DOOR SYSTEM

**Excellence In What We Do
We Care for QUALITY**



PROJECTS DONE/ON GOING

B+G+M+4 RES/COMM BUILDING AT HOR AL ANZ, DUBAI

Windows, Doors, ACP Clading, Balcony Glass rail & Steel Works



REAR & SIDE VIEW

PROPOSED B+G+M+4 RES/ COMM.BUILDING ON PLOT NO.-1330237 AT HOR AL ANZ , DUBAI.



Rt Royal Tech Aluminium & Steel L.L.C.
P. O. Box 5068, Ajman, United Arab Emirates
Tel.: +971 6 7482 024, Fax: +971 6 7483 056, Mob: +971 55 811 4542
Email: sales@royaltechuae.com, Web: http://www.royaltechuae.com

Excellence In What We Do
We Care for QUALITY



PROJECTS DONE

G+3 SEWA at Muwailah , Sharjah

Curtain Wall, Windows, Doors, Kitchen Cupboards & Steel Works



Excellence In What We Do
We Care for QUALITY

PROJECTS DONE

CANOPY AT AL BARSHA- UAE

Steel Structure Works, ACP Cladding,
Stainless Steel Column Cladding and SS Tube Louver



Excellence In What We Do
We Care for QUALITY



PROJECTS DONE

G+1 LEXUARY VILLA AT SHARQAN – UAE

Curtain Wall, Windows, Doors, Kitchen Cupboards & Steel Works
Stainless Steel Hand rail, Balcony Hand Rail, Canopy



Excellence In What We Do
We Care for QUALITY



PROJECTS DONE

G+1 LEXUARY VILLA AT SHARQAN – UAE

FOLDING DOORS



Excellence In What We Do
We Care for QUALITY



PROJECTS DONE

SUB-STATION PROJECTS - SEWA- UAE
Windows, Doors, Kitchen Cupboards & Steel Works

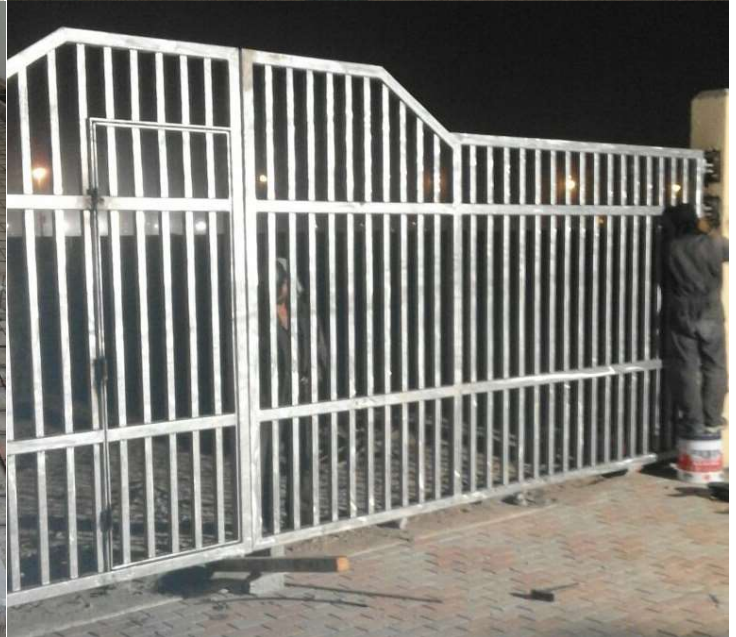
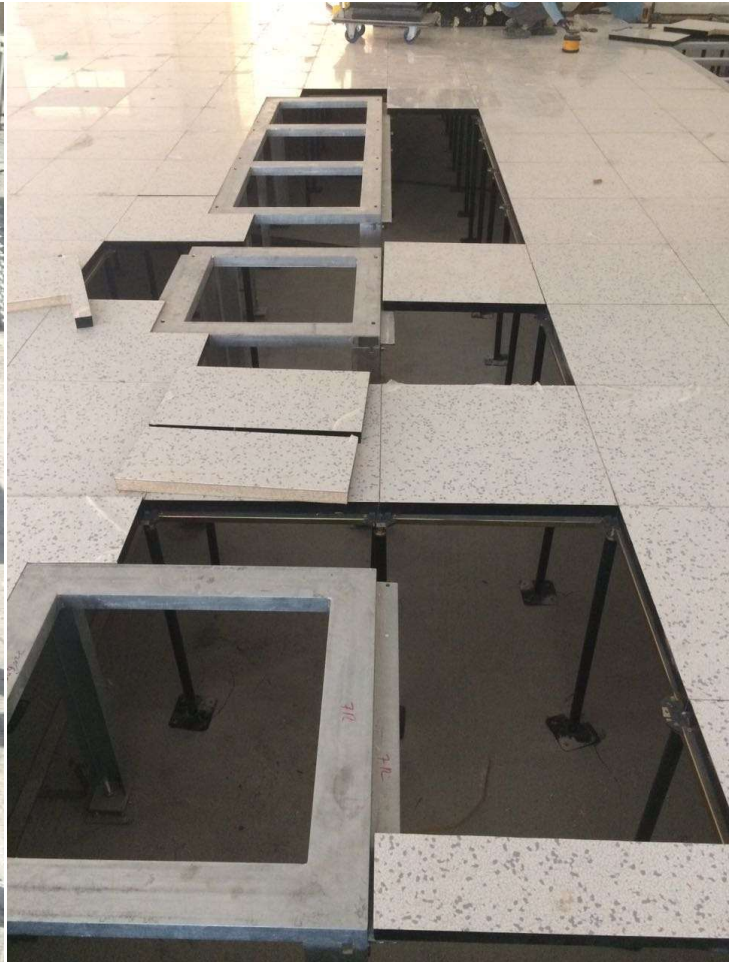


Excellence In What We Do
We Care for QUALITY



PROJECTS DONE

STEEL WORKS AT SEWA SUBSTATION IN UNIVERSITY AND TILAL CITY SHARJAH



Excellence In What We Do
We Care for QUALITY



PROJECTS DONE

GULF PETROCHEM OFFICE – UAE
Curtain Wall, Windows, Doors, ACP Cladding,
Kitchen Cupboards & Steel Works



Excellence In What We Do
We Care for QUALITY



PROJECTS DONE

GREEN SPRING WATCH TOWER - UAE
Structural Steel Work, Curtain Wall
ACP Cladding, Doors & Kitchen Cupboards



Excellence In What We Do
We Care for QUALITY



PROJECTS DONE

ALASKA OFFICE – UAE

Curtain Wall, ACP Cladding & Kitchen Cupboard



Excellence In What We Do
We Care for QUALITY



PROJECTS DONE

FORD SHOW ROOM DUBAI – UAE

Curtain Wall, Automatic Sliding Doors, Doors and ACP Cladding



Excellence In What We Do
We Care for QUALITY



PROJECTS DONE

INNOVA

Structural Steel Work, Standing Seam Roofing.

Curtain Wall, ACP Wall Cladding & Internal Cement Fiber Board Wall



Excellence In What We Do
We Care for QUALITY



PROJECTS DONE

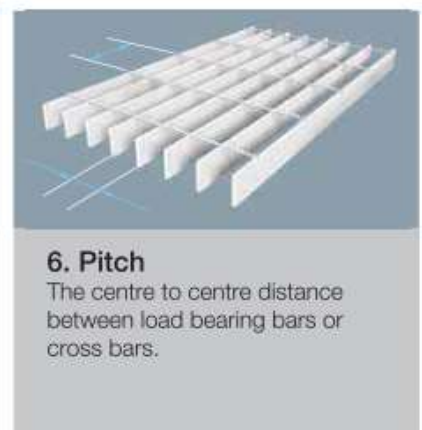
STRUCTURAL MEZZANINE & ROOF WORK AT INNOVA WATCH TOWER



Excellence In What We Do
We Care for QUALITY

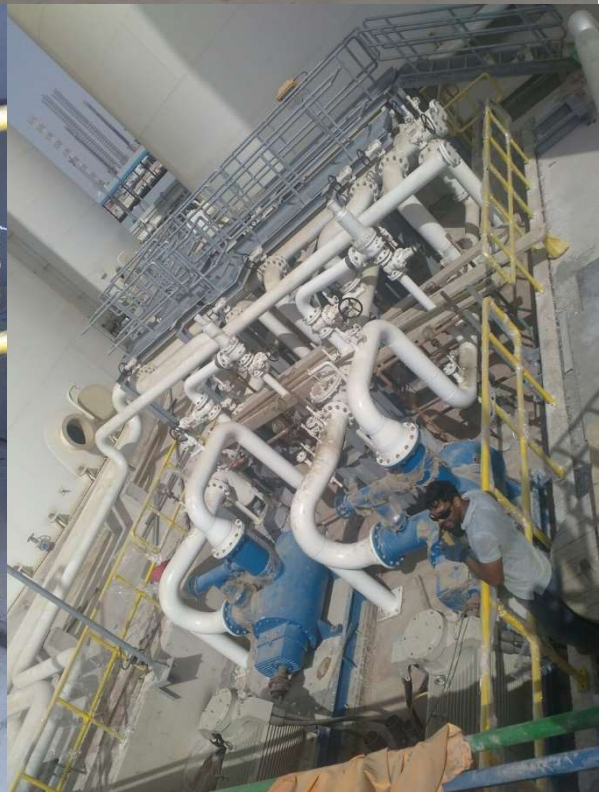
PROJECTS DONE

DUBAI MALL WALK WAY BRIDGE - HOT DIPPED STEEL GRATINGS



PROJECTS DONE

STEEL WORKS DONE AT SHARAFCO IN HAMRIYAH FREE ZONE



Excellence In What We Do
We Care for QUALITY

PROJECTS DONE

LUXURY VILLA – AL BARASHI
UPVC WINDOWS & STEEL WORKS



Excellence In What We Do
We Care for QUALITY



Kitchen Designs Done By Us



RT-01



RT-02



RT-03

Excellence In What We Do
We Care for QUALITY

Kitchen Designs Done By Us



RT-04



RT-05

Excellence In What We Do
We Care for QUALITY

Kitchen Designs Done By Us



RT-06



RT-07

Excellence In What We Do
We Care for QUALITY



Kitchen Designs Done By Us



RT-08



RT-09

Excellence In What We Do
We Care for QUALITY

Kitchen Designs Done By Us



RT-10



RT-11

Excellence In What We Do
We Care for QUALITY



Kitchen Designs Done By Us



RT-12



RT-13

Excellence In What We Do
We Care for QUALITY

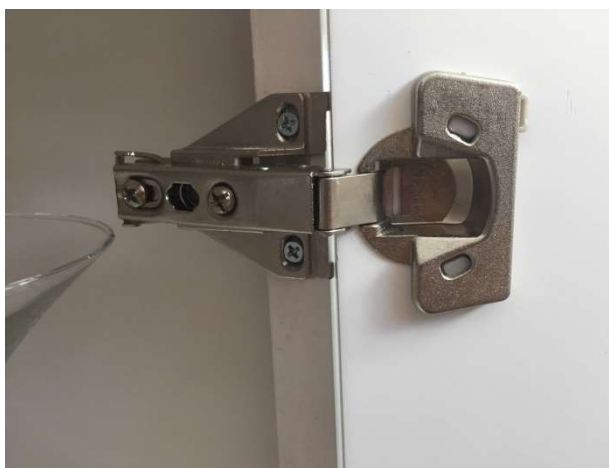


Royal Tech

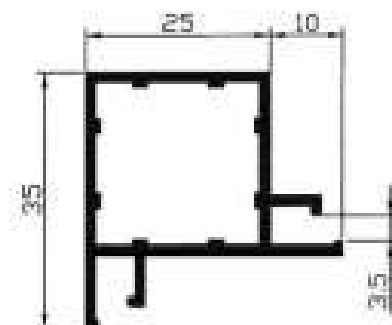
(Kitchen Designs)



HINGES



HINGES



Double Groove Far 25 series

ALUMINIUM FRAME

Excellence In What We Do
We Care for QUALITY



Royal Tech

(Kitchen Designs)



SS SINK SINGLE BOWL



SS SINK DOUBLE BOWL

Excellence In What We Do
We Care for QUALITY



Royal Tech

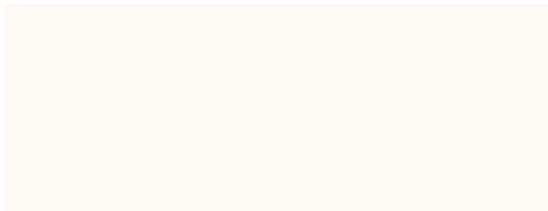
(Kitchen Designs)



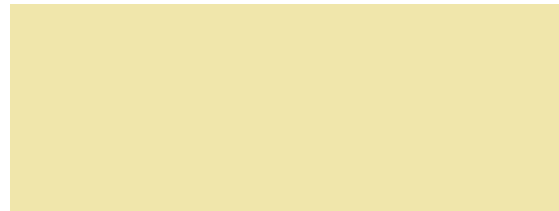
HPL SHEET WOODEN FINISH



HPL SHEET RED SHADE



HPL SHEET WHITE SHADE



HPL SHEET BEIGE SHADE



GRANITE TAN BROWN



GRANITE ROSA PORRINO



BLACK GRANITE



GREY GRANITE

Excellence In What We Do
We Care for QUALITY



ALUMINIUM HAND RAILS



Excellence In What We Do
We Care for QUALITY

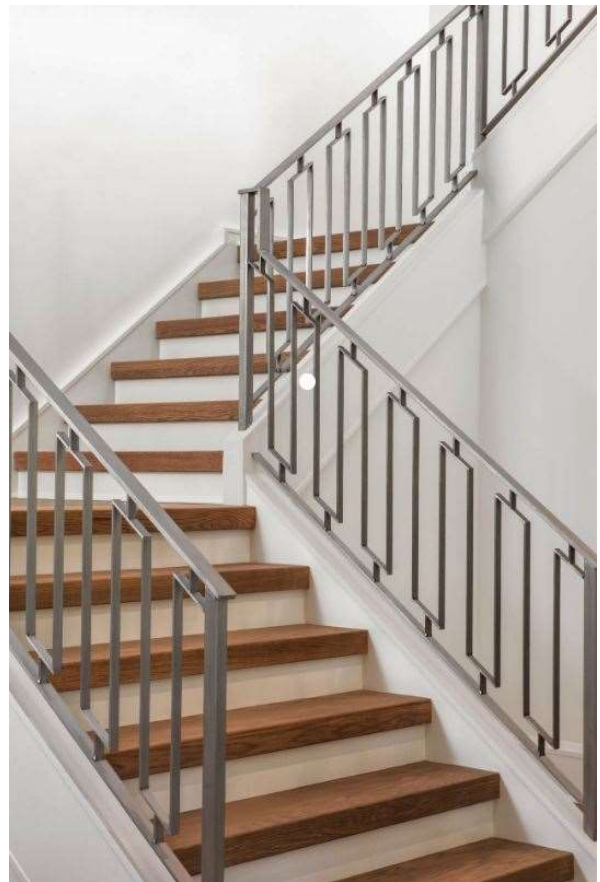


STAINLESS STEEL HAND RAILS



Excellence In What We Do
We Care for QUALITY

MS HAND RAILS



Excellence In What We Do
We Care for QUALITY



MS HAND RAILS



Excellence In What We Do

PERGOLA & MUSHRABIA WORKS



Excellence In What We Do
We Care for QUALITY

PREVIOUS PROJECT APPROVALS

CLIENT  هيئة كهرباء ومياه الشارقة Sharjah Electricity & Water Authority	CONSULTANT  العاصمة للاستشارات الهندسية CAPITAL ENGINEERING CONSULTANCY																
CONTRACTOR  DEVELOPER BUILDING CONTRACTING LLC	DOCUMENT - 30 <table border="1" style="width: 100%; border-collapse: collapse;"> <tr> <td style="width: 30%;">Subd.#:</td> <td style="width: 40%;">CEC/DBC/253/SDS/030/18</td> <td style="width: 10%;">Rev.</td> <td style="width: 20%;">02</td> </tr> </table>	Subd.#:	CEC/DBC/253/SDS/030/18	Rev.	02												
Subd.#:	CEC/DBC/253/SDS/030/18	Rev.	02														
TO : CAPITAL ENGINEERING CONSULTANCY FROM : DEVELOPER BUILDING CONTRACTING LLC																	
Specification / BOQ Ref. / Drawing No.: Alternate If any No.:																	
Discipline: <input type="checkbox"/> Arch <input type="checkbox"/> Street <input type="checkbox"/> Mech <input type="checkbox"/> Elec <input type="checkbox"/> Plumb <input type="checkbox"/> Land <input checked="" type="checkbox"/> Other _____																	
Level: _____ Grid: All																	
ENCLOSURES: <table border="1" style="width: 100%; border-collapse: collapse;"> <tr> <td style="width: 25%;"><input type="checkbox"/> Technical Data</td> <td style="width: 25%;"><input type="checkbox"/> Test Reports</td> <td style="width: 25%;"><input type="checkbox"/> O & M Manual (Prel.)</td> <td style="width: 25%;"><input checked="" type="checkbox"/> Others (Specify)</td> </tr> <tr> <td><input type="checkbox"/> Samples</td> <td><input type="checkbox"/> Calculations</td> <td><input type="checkbox"/> O & M Manual (Final)</td> <td></td> </tr> <tr> <td><input type="checkbox"/> Compliance Statement</td> <td><input type="checkbox"/> Warranty</td> <td><input type="checkbox"/> Schedule</td> <td></td> </tr> <tr> <td><input type="checkbox"/> Method Statement</td> <td><input type="checkbox"/> Material Approval</td> <td></td> <td></td> </tr> </table>		<input type="checkbox"/> Technical Data	<input type="checkbox"/> Test Reports	<input type="checkbox"/> O & M Manual (Prel.)	<input checked="" type="checkbox"/> Others (Specify)	<input type="checkbox"/> Samples	<input type="checkbox"/> Calculations	<input type="checkbox"/> O & M Manual (Final)		<input type="checkbox"/> Compliance Statement	<input type="checkbox"/> Warranty	<input type="checkbox"/> Schedule		<input type="checkbox"/> Method Statement	<input type="checkbox"/> Material Approval		
<input type="checkbox"/> Technical Data	<input type="checkbox"/> Test Reports	<input type="checkbox"/> O & M Manual (Prel.)	<input checked="" type="checkbox"/> Others (Specify)														
<input type="checkbox"/> Samples	<input type="checkbox"/> Calculations	<input type="checkbox"/> O & M Manual (Final)															
<input type="checkbox"/> Compliance Statement	<input type="checkbox"/> Warranty	<input type="checkbox"/> Schedule															
<input type="checkbox"/> Method Statement	<input type="checkbox"/> Material Approval																
DESCRIPTION: PREQUALIFICATION DOCUMENTS FOR ALUMINIUM WORKS																	
Attachments:																	
MANUFACTURER: _____ SUPPLIER: ROYAL TECH ALUMINIUM & STEEL, LLC																	
<p style="text-align: center;">Only One Item per Submittal is recommended</p> <p>We confirm that the material is suitable for the conditions of use and conforms with the contract specifications and all applicable codes, standards and statutory requirements. We confirm that no variation in the contract sum is implied or claimed by this submittal sheet. Acceptance of this material submittal does not alter in any way whatsoever our contractual or common obligations and responsibilities. Where the submittal is in any way in variance with the specification, such variations must be identified and brought to the attention of the Engineer or Engineer's representative on this form. The Engineer's acceptance will be invalid if such variations are not identified.</p>																	
Main Contractor: _____ Date: _____																	
ENGINEER'S COMMENTS: <i>THIS APPROVAL IS SUBJECTED TO CLIENT ENGINEER APPROVAL</i>																	
Attachments:																	
<input type="checkbox"/> A - Approved <input checked="" type="checkbox"/> B - Approved with comments (Resubmit for Record) <input type="checkbox"/> C - Rejected <input type="checkbox"/> D - Not Reviewed																	
For and on behalf of the Engineer _____ Date: _____																	
STATUS : _____																	
Copied To: _____																	
Received for Contractor : _____ Date: _____																	

PQP Approval: _____

Received By: _____

Signed above Printed Name/Date



Excellence In What We Do
 We Care for QUALITY

PREVIOUS PROJECT APPROVALS

PC. ALUM. LOUVRE

OUTSIDE

72

PC. ALUM. LOUVRE

APPROVED
20 AUG 2019
إدارة التخييل الهندسي
Imagining Department
CLIENT:

هيئة كهرباء ومياه الشارقة
Sharjah Electricity & Water Authority
P.O. BOX 135, SHARJAH

CIVIL CONSULTANT:
بلال حودود للاستشارات الهندسية
Bela Hodod Engineering Consultants
مكتب (رقم) ١٠٧ : هاتف / فاكس : ٧٤٣٠٩٤٨ : ص.ب. ٧٠٣٢
Office : 407, Telephone / Fax : 06 - 7430948, P.O.Box : 7032
Email : md@belahodod.ae

MAIN CONTRACTOR:
Scan Electromechanical Cont Co.LLC.
P.O.Box - 31599, Sharjah, U.A.E.
Tel : +971 (0)6 5422773
Fax : +971 (0)6 5422986
E-mail: gka953@emirates.net.ae

CIVIL CONTRACTOR:
DEVELOPING BUILDING CONTRACTING LLC
P.O. Box-6839 L.Sharjah- UAE
DEVELOPER

ALUMINIUM CONTRACTOR :
Royal Tech Aluminium & Steel L.L.C.
P. O. Box 5068, Ajman, United Arab Emirates
Tel.: +971 6 7482 824, Fax: +971 6 7483 856, Mob: +971 55 811 4542
Email: sales@royaltechuae.com, Web: http://www.royaltechuae.com

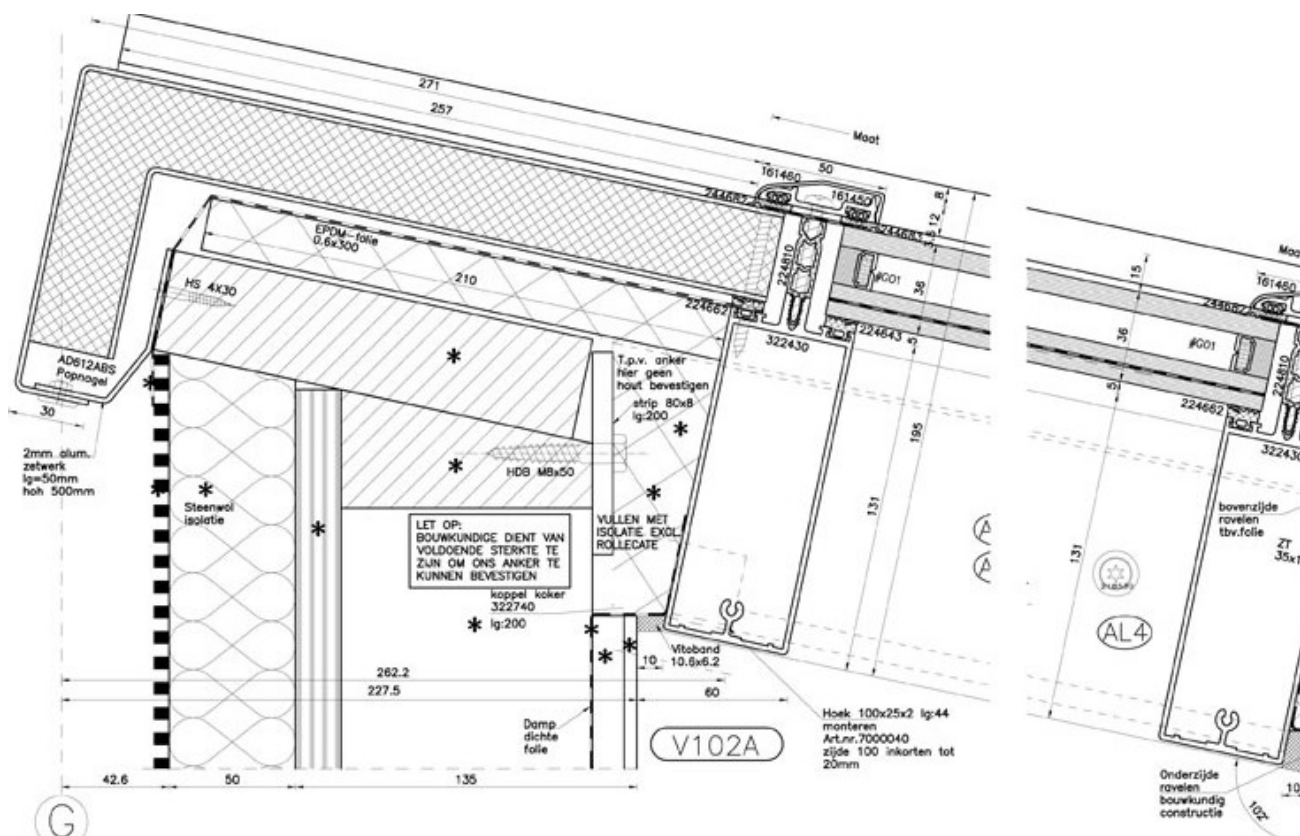
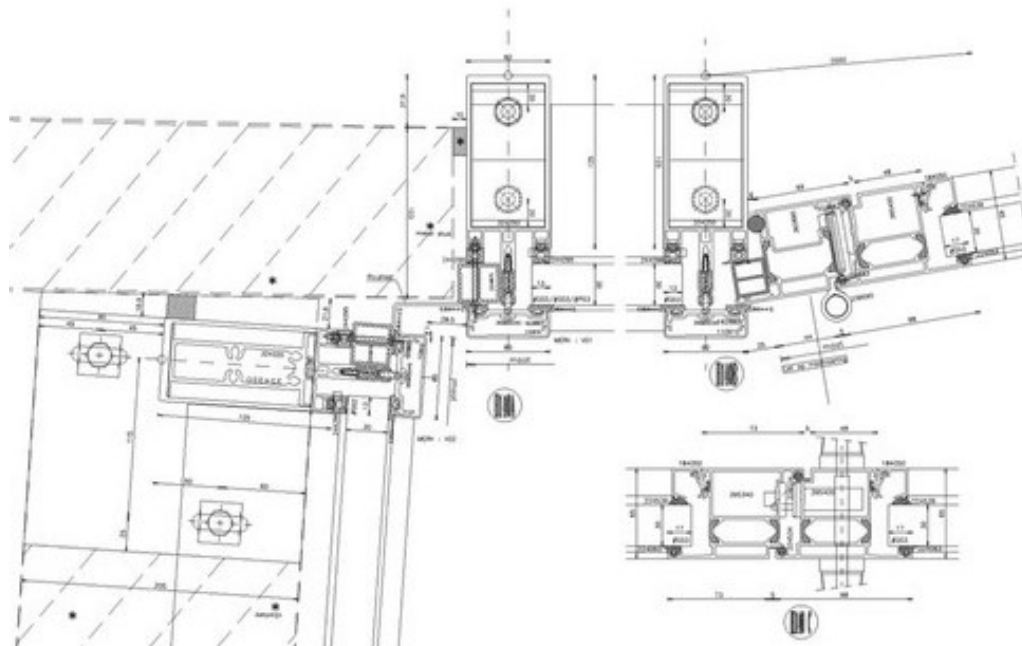
FILE RECEIVED
27 JUL 2019
Notes: إدارة التخييل الهندسي
Imagining Department

S.No	ITEMS UPDATED	DATED
3		
2		
1		

PROJECT: 33/11 KV SAIF ZONE SUBSTATION

DRAWING TITLE: DOORS DETAIL

SCALE:	1:100	DATE:	JUNE: 2019
DRWG-NO:	D 07	DRAWN BY:	NITHIN
DESIGNED :			



P. O. Box 5068, Ajman, United Arab Emirates
Tel.: +971 6 7487 148, Mob: +971 55 811 4542
Email: sales@royaltechuae.com

Excellence In What We Do
We Care for QUALITY